

LIGHTNING STUDIO 66
WHITE STREET 3F
NEW YORK 10013

Lightning Studio is a lighting design consultancy based in New York. Across a range of project types, we transform environments into experiences through the bold power and alluring subtlety of light. Our functional and playful style is guided by the belief that light is the defining element of every visual experience.

FOREWORD

Possessing the power to transform, seduce, and engage, the art of lighting is not to be seen, but felt. Too often considered as an ancillary design element, lighting does not merely enhance but defines the emotional essence of every environment, and we approach all visual disciplines in terms of this invisible magic. Color is the eye’s perception of the wavelength of light; architecture is observed through the interplay of light and shadow. Strong or soft, powerful or poetic, light changes and adapts our interaction with physical space, creating mood as it pours over objects or carves through the air like a bolt of lightning. Embracing the full palette of light from the outset of every project empowers us to express opposition of feeling within one concept, creating a true collaboration between interiors and their lighting to manifest meaningful experiences.

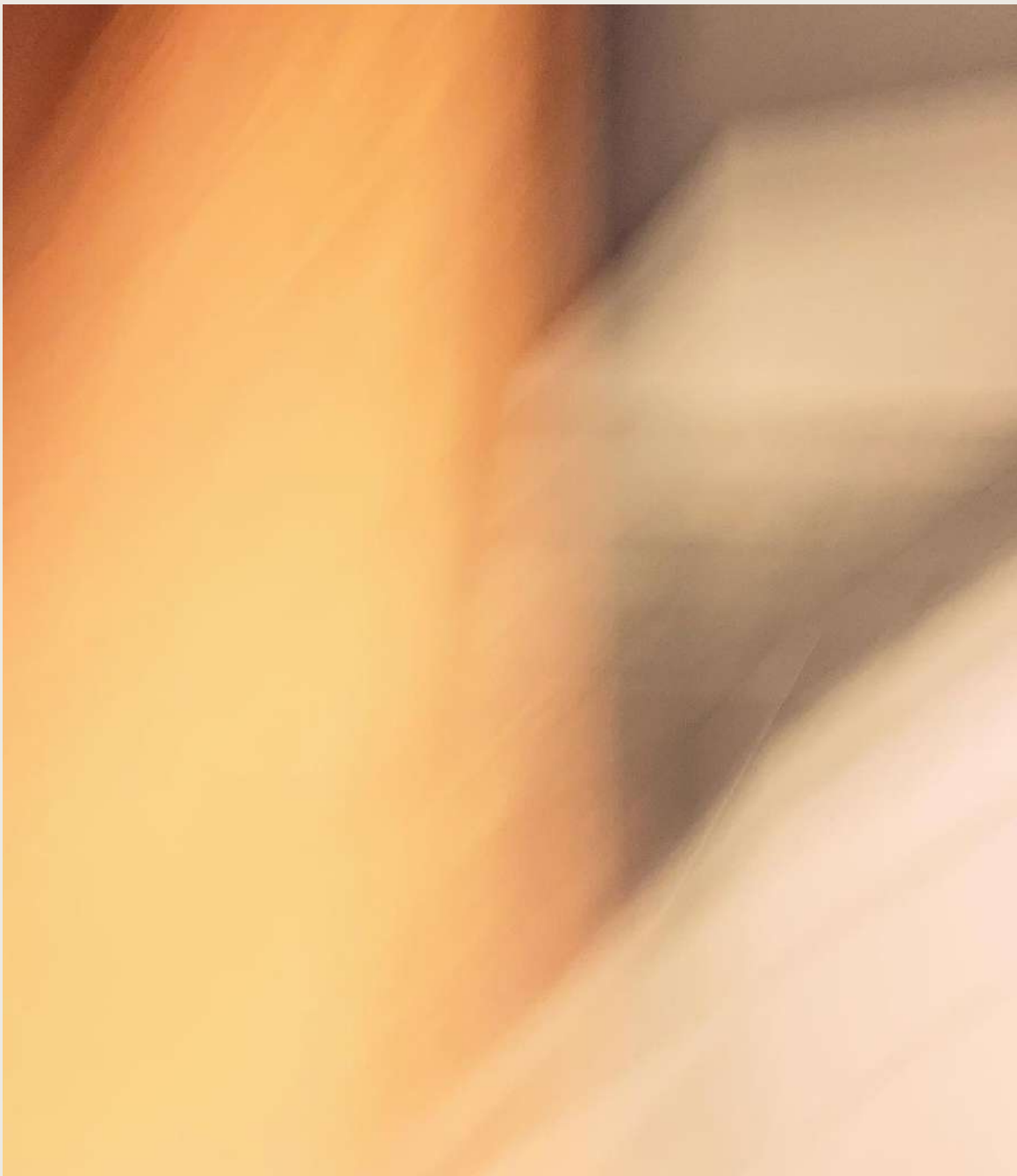
PROCESS

We are interested in people-centric lighting design. Lighting can be a powerful tool in the manipulation and exaltation of a spaces structure. Architecture and lighting have a long and intimate relationship, but lighting can also be rooted in the perspective of the user.

CONCEPT

The beginning phase of a project is more free form than those that follow. Concept Design is our chance for uninhibited, blue-sky ideation. We review the project in close detail and look to local context to evaluate existing experiences in the market. Inspiration can be found in the most unlikely or unassuming places, woven together to establish an overall mood and atmosphere for the lighting scheme.

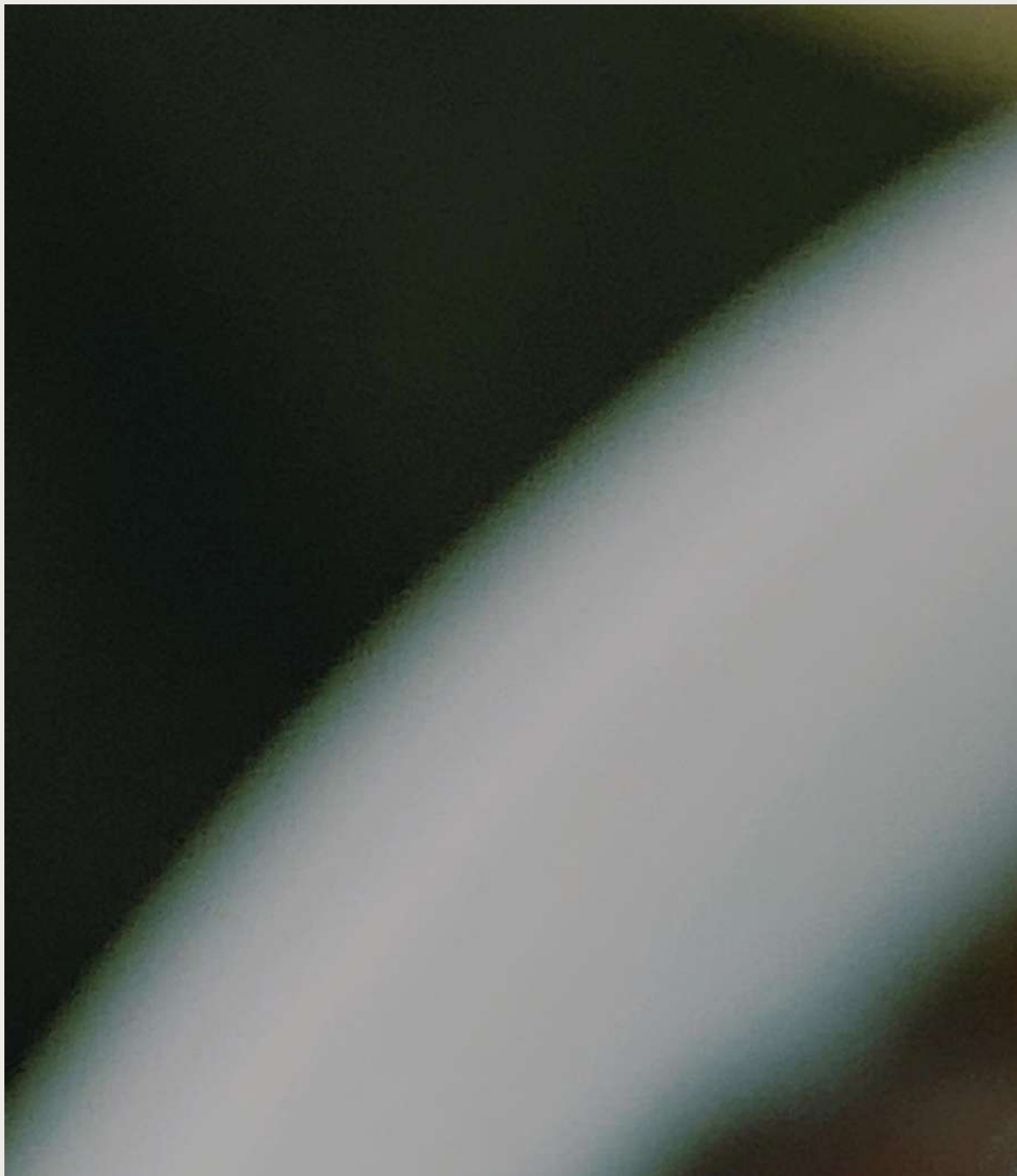
The design direction takes shape in this phase, acting as the north star that will guide all further development of the project. A successful conceptual direction will be at once aspirational, cohesive and immersive for the guest. It will elevate the interior design of the project while also embracing the clients vision, with an added bit of surprise.



DOCUMENT

Following Concept Design, we move into several phases of development and documentation. These phases make the lighting concept real. We study floorplans, elevations, key design details and big moments to test applications of the lighting scheme. Through documentation, the lighting scheme is refined and detailed.

Spaces are rendered in 3-D visualizations in both day and night to show the power of intentional lighting in a space. Our documentation phases culminate in a robust drawing package that includes lighting control specifications, renderings and all necessary plans and elevations.



FOCUSING

This is our final touch. The month prior to opening, our senior lighting designer spends one week at the project site focusing each room by hand. This is when the true artistry of the process shines.

As our last opportunity to adjust the scheme, it's important each room and fixture is properly focused to fully realize the original concept conceived at the start of the process. Even minor corrections—like a slight adjustment to a recessed angle can have huge influence on the final, overall perception and experience of the space.



WAVE

PAINT



FLIM

COLL

2018

*Hong Kong
Restaurant*

ARBOR

2018

*New York
Restaurant*

BAR WAYO

2018

*New York
Retail*

DEPARTO

2019

*New York
Restaurant*

THE FULTON

2019

*Toronto
Retail*

GOOP

2022

*Doha
Retail*

PRINTemps

2022

*Beijing
Hotel*

RITZ CARLTON

2022

*Tokyo
Residential*

AMAN

THE FULTON

At Jean-Georges Vongerichten's approachable fine dining concept in Manhattan's Seaport District, warm, diffused light sets the mood of intimate allure. The lush, low lighting instills confidence and charisma in all who enter, casting every guest as a VIP slipping in for a romantic rendez-vous out of the public eye. A careful balance of amber and cool-hued light allows the space to support both culinary craftsmanship and absolute leisure, integrating rather than isolating the areas defined for staff and guests to achieve a more personal, convivial tone. Dimmable fixtures facilitate the transition of mood from bright and

airy during brunch time to sultry and intriguing for dinner guests, and alternating enclaves of shadow and illumination propose intuitive pathways through the restaurant. Focal points created by uplighting the sparkling bar and precisely placed pendant lights over the tables create a seductive tension between privacy and spectacle. The relative restraint of the interior lighting respects the romantic city lights spangled across the restaurant's view of the Brooklyn Bridge at night, and soft spotlights on the artwork of fantastical sea creatures inside insists on New York's unique identity as an oceanside metropolis.



New York









ARBOR

A quintessential color story, Arbor Hong Kong exemplifies the power of light to influence the emotional experience of hue. Lightning Studio varied the intensity and direction of the sympathetically concealed fixtures throughout the restaurant to reveal the richness of Arbor's particular, first-blush-of-love shade of pink. Modulated brightness, rather than tone, creates subtle variations throughout the space to prevent visual fatigue and make each facet of the all-over color legible while inviting guests to immerse themselves in the dominant shade's glamorous charm. It is through light that the nearly monochromatic color scheme becomes at turns sensuous, comforting, and invigorating, and the lighting concept creates further visual texture by emphasizing the archways and surprising architectural motifs. The heady, sophisticated atmosphere of Arbor does not immediately seem to be defined by lighting, yet any other choice of fixtures, placement, and quality of light would reveal a different restaurant entirely.



Hong Kong





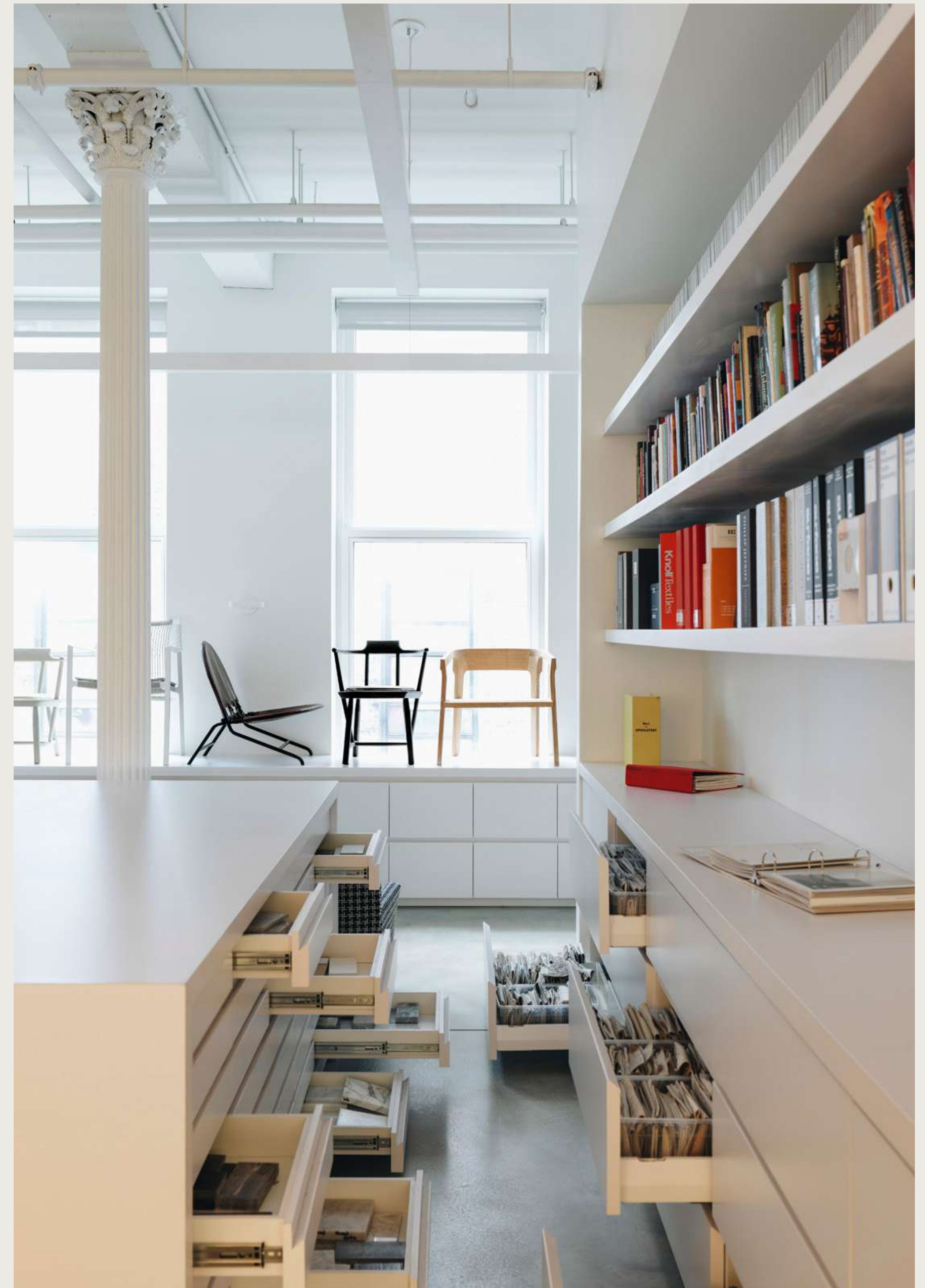


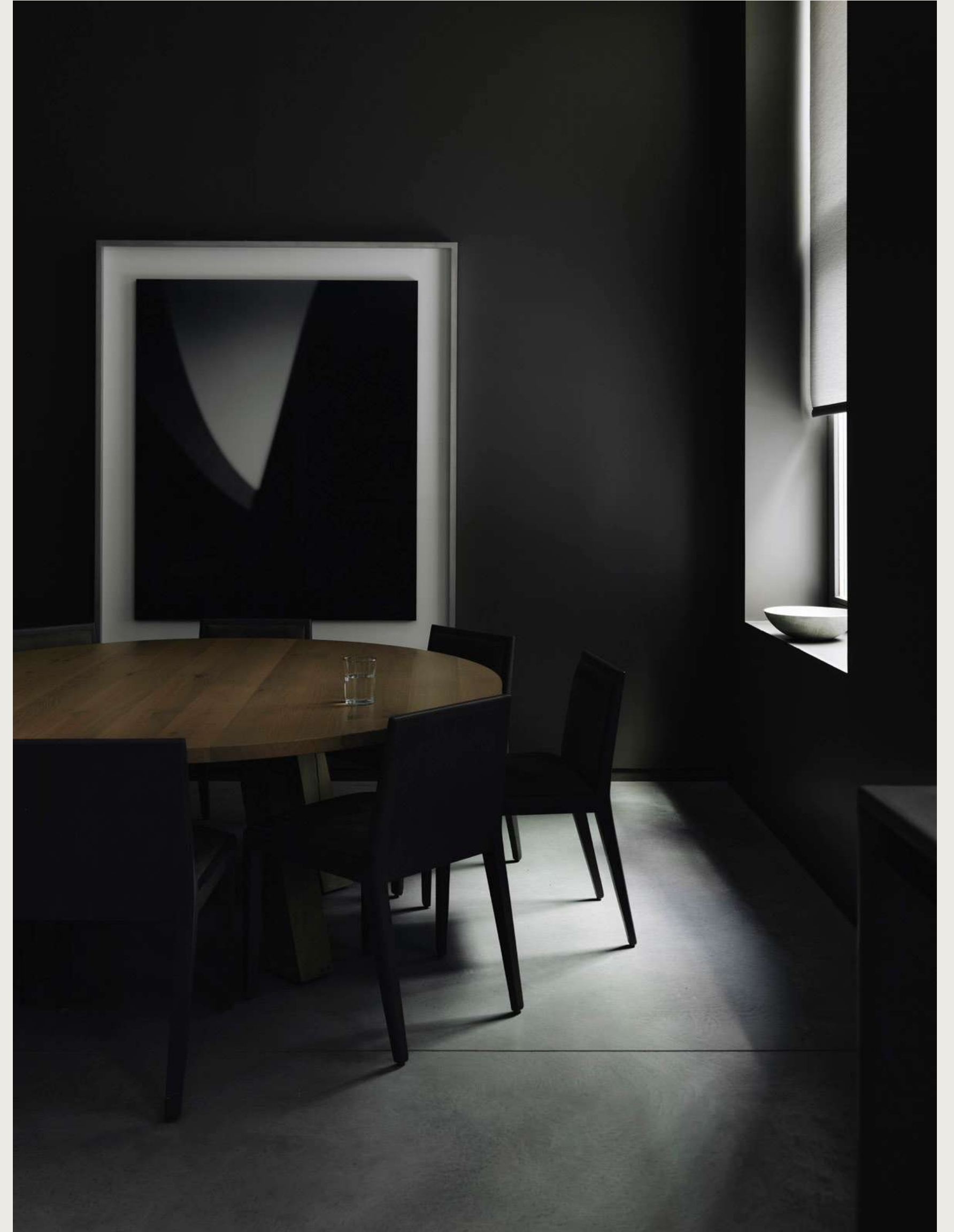
YABU PUSHELBERG

Lightning Studio brought the warmth and comfort of residential lighting to Yabu Pushelberg's New York offices to translate the notion of working from home into the concept of a home for work. Lightning Studio approached each space within the studio differently, depending on its functional requirements, balancing pragmatism with decidedly domestic mood. Warm, hospitality-inspired illumination welcomes team members and visitors at reception, transitioning into the brighter materials library where creativity and focus are prioritized.

The fourth floor, home to the studio's designers, offers a variety of lighting as well-rounded as the talent it supports. Intimate nooks for collaboration are lit comfortably, facilitating connection and conversation by inspiring ease, and open-lit center tables and workstations promote creative energy through bright—but never overwhelming—light. Intuitive and empathetic, the lighting at Yabu Pushelberg NY evinces how a successful work environment responds to the needs of its people.

New York







(66) GALLERY

In the heart of Tribeca lives (66) Gallery, a space with the ability to seamlessly evolve from art exhibit to party venue to presentation room to pop-up installation. To realize the enigma that is (66), Lightning Studio created a lighting system as multi-dimensional as its venue. Layers of choice were installed and executed through diverse dimmers with interchangeable bulbs and strategic accent lighting lining the walls, resulting in an environment that harnesses all the promise and possibility of an invitingly blank canvas. Far from lacking personality, (66) Gallery's multilayered lighting concept emphasizes its role as an equal collaborator in realizing the aesthetic and narrative goals of the artists, hosts, and presenters who occupy the space. It is a home for storytelling, and like the best storytellers, (66) Gallery offers a clear and honest point of view, facilitated by a rich palette of lighting potentiality.

New York









AMAN RESIDENCES

Knowing that the arrival lobby at Aman Residences would serve as the property's first introduction to prospective global buyers, Lightning Studios established an inviting lighting concept that is at once easygoing and elegant. Light sculpts space in the arrival lobby, highlighting artwork and emphasizing the perimeter to evoke the sensation of an oasis nestled within bustling Tokyo. In celebration of the hotelier's first residential property, Lightning Studios emphasized ambient and decorative lighting to reference the emotional experience of an impeccably designed home. Universally flattering light in the lobby restrooms encourages guests to envision their best selves at Aman, while subtle nuances of light allow each person to enjoy a unique experience of the lobby, inspiring a symbolic sense of ownership and personal pride.

Tokyo





RITZ CARLTON

Inspired to draw nature indoors, Lightning Studio crafted five thematic touchpoints to define each floor's dedicated lobby at the Ritz Carlton Beijing. Conceived as a gradient moving from forest floor through branch, blossom, seed pod, and finally, leaf, each layer communicates its purpose and style through tailored lighting techniques that also serve as intuitive wayfinding for guests.

Simultaneously, Lightning Studio created conversation between layers, blending juxtaposition into a progressive sense of momentum, energized and made cohesive through the gradual changes in light. Uniting the interior and exterior of the building conceptually, Lightning Studios extended the lighting scheme to interact with the building's façade. Illuminated at night, the towering tree at the heart of the lighting concept becomes a breathtaking point of architectural interest.



Beijing

INFO@
LIGHTNING STUDIO
NYC.COM